



BRENTSIDE SIXTH FORM

LEARNING AND ACHIEVING TOGETHER

Course Directory



SCHOOL VISION

Brentside High School challenges all to achieve excellence as lifelong learners with the highest expectations of themselves and others.

No exceptions, no excuses.

An Introduction from our Headteacher

Brentside High School's Sixth Form has a long history of academic and vocational success. For many years now, our student outcomes, on average, have placed our Sixth Form firmly within the top 10% of all Post-16 education centres in the country and in two, recent, pre-Covid years, results have been in the top 2% nationally (Alps and Department for Education data). These outcomes do not happen by accident; students achieve so highly at Brentside because of the outstanding teaching, care, guidance and support that they receive. Teaching in our Sixth Form is inspirational. Ofsted reported that "Teachers' strong and confident subject knowledge captivates and inspires pupils. Students in the sixth form are especially appreciative of their teachers' expertise." Our teachers go the extra mile to ensure that all students are supported every step of the way. This is what makes our school unique; we work with warmth, care and investment in our young people. At Brentside we care about each student as an individual. We understand that we all have different strengths and that we all need to be challenged and supported in different ways. We have a strong reputation and are visited by schools from London and beyond because of the way we support our students to make progress. Our strong and highly experienced Sixth Form Leadership Team have an excellent track record in supporting individual students to move on to the right pathway for them, be that securing apprenticeships or getting into their chosen universities, (with a good number successfully gaining entrance to top Russell Group universities, including Oxford and Cambridge).

Whether you have studied with us from Year 7 or will be joining us from another school next September, the Sixth Form at Brentside brings with it new ways of working, the opportunity to specialise in the subjects you are passionate about, privilege, independence, responsibility and the opportunity to work alongside like-minded peers as well as to mix with those you have not previously worked with. We provide a Sixth Form of approximately 250 students - big enough for you to have a variety of people to mix with but small enough to ensure that you feel part of the Brentside community and gain that individual attention and care that we know supports outstanding achievement.

If you are hardworking, committed, have a track record of success and meet the entry criteria for the subjects you wish to study, we look forward to your application to the Sixth Form at Brentside and to welcoming you to be a part of our continued success.

Yours faithfully,



Charlotte Hames

Message from the Sixth Form Team

Brentside High School offers an exciting range of academic, vocational and extra-curricular opportunities in a unique environment that will suit all students whatever your learning style, ambitions and interests.

As well as being high achieving, Brentside's Sixth Form has a vibrant yet personalised and friendly atmosphere where every student is made to feel special and is given the opportunity to flourish.

Brentside students are confident, independent learners who are academically successful and are encouraged to develop many other interests. As a member of the Sixth Form you will be challenged to achieve excellence at all times. You will be guided towards increasing academic and personal independence.

We work hard to ensure students benefit fully from Sixth Form life by developing links with top universities, companies and other prestigious organisations. We aim to provide students with access to the industries that interest them and outstanding opportunities to enhance their curriculum vitae and UCAS applications.

If you join the Brentside High School Sixth Form, we will ensure that you have the best experience and the opportunity to achieve the highest qualifications ready for a bright future ahead.

The Sixth Form Team

- **Mr H. Mahdi, Assistant Headteacher, Director of Sixth Form**
- **Dr J. Boshier, Head of Sixth Form**


What can you expect from us to help you achieve your educational aims?

- A well-qualified and committed staff
- Individual support from the Sixth Form Team and tutors
- Sixth Form Study area with excellent IT facilities
- Designated study area in the library with IT facilities
- Careers and higher education information, advice and guidance

Please talk to your teachers about the courses on offer and if in doubt consult either of the above staff. If you are not currently studying at Brentside then email your questions to 6thformadmissions@brentsidehigh.ealing.sch.uk. We aim to run all courses advertised, however at times it is possible that a course may not run if low numbers mean that the course is not financially viable.

Yours faithfully,





ADMISSIONS CRITERIA AND PROCEDURE FOR SEPTEMBER 2023 ENTRY

Brentside High School Sixth Form is committed to working in partnership with you to enable you to reach your potential. In order to be successful, you must be able to work independently. **Every week you will be expected to undertake a minimum of 20 hours of study outside of the classroom.** This approach may be different from your previous experience, and it requires maturity and self-motivation. We have high expectations about your role in school. We expect you to set an example to younger students and help them to succeed. They will admire you and hope to be like you one day, so we ask you to be a good role model. You will need to achieve the minimum grade requirements for your chosen A level subjects, as specified below. Your reference or supporting information provided by your school indicates no significant concern regarding your record of attendance, fitness to study a full-time course, punctuality, general behaviour, attitude to study or aptitude for the proposed course of study.

Sixth Form Programme of Study	GCSE entry required for study programme
4 A levels + Level 3 extended project	8+ Grade 9-7 at GCSE including English language or literature and mathematics
3 A levels + Level 3 extended project	5+ Grade 9-5 at GCSE including English language or literature and mathematics
Level 3 BTEC course(s) + Level 3 extended project	5+ Grade 9-4, including English language or literature and mathematics
1 Level 2 course	5+ Grade 9-3 at GCSE including English language or literature and mathematics

All Level 3 (advanced) courses are suited to students who enjoy academic study and have proven their high academic ability through their GCSE results. Universities use a combination of GCSE grades, Level 3 predicted grades, personal statements and references to select students who will be offered a place at their institution.

Level 2 courses are one year courses. Students who achieve a high merit grade can progress to a Level 3 course the following year, provided that they have achieved a grade 4 in both mathematics and English GCSEs.

GCSE re-take courses in English language and mathematics. These are compulsory for students if they have yet to achieve a Grade 4 in English and/or mathematics.

Level 3 Extended Project Qualification. Students taking advanced courses will be required to take the Level 3 extended project which is a qualification designed by universities to ensure that students have the skills required for higher education. Students will develop a project of their own choosing in a topic that interests them. Students will be supported in a weekly lesson. In employment, there is an increasing trend towards management through the use of projects of various sizes and duration, making the extended project relevant to all career paths.

We aim to run all courses advertised, however at times it is possible that a course may not run if low numbers mean that the course is not financially viable.

ACADEMIC CRITERIA FOR SIXTH FORM STUDY

ENTRY REQUIREMENTS FOR A LEVEL STUDY

Minimum entry requirements: five Grade 9-5 at GCSE plus subject specific requirements (see below)

SUBJECT	SPECIFIC MINIMUM GCSE (or equivalent) REQUIREMENTS
Art: Fine art, graphic communication, photography, product design and textiles.	Grade 5 in the relevant GCSE art subject or Merit in Level 2 BTEC art & design
Biology	High Grade 6-6 in combined science or high grade 6 in biology, plus 6 in mathematics and 5 in English language or literature
Chemistry	High Grade 6-6 in combined science or high grade 6 in chemistry, plus 6 in mathematics and 5 in English language or literature
Computer science	Grade 6 in GCSE computing, plus 6 in mathematics and 5 in English language or literature
Economics	Grade 6 in mathematics and 5 in English language or literature
English literature	Grade 6 in English language and literature
French	Grade 6 in French and 5 in English language or literature
Further mathematics	Grade 8 in mathematics
Geography	Grade 5 in geography and 5 in English language or literature and Grade 5-5 in GCSE combined science or Grade 5 in GCSE physics
History	Grade 5 in history and 5 in English language or literature
Mathematics	High Grade 6 in mathematics
Media studies	Grade 5 in English language or literature
Music	Grade 6 in GCSE music and able to perform to Grade 4 standard. If you have not studied GCSE Music, you will need to demonstrate Grade 5 Associated Board of the Royal School of Music theory and practice (or equivalent)
Music technology	Grade 5 in GCSE music or high Level 2 Pass in NCFE Level 2 Technical Award in Music Technology and Grade 4-4 in GCSE combined science or Grade 4 in GCSE mathematics/physics
Politics	Grade 5 in history or geography and 5 in GCSE English language or literature
Physical education	Grade 5 in mathematics and English language or literature, 5-5 in GCSE combined science and 5 in either physical education or biology
Physics	High Grade 6-6 in combined science or high grade 6 in physics, plus 6 in mathematics and 5 in English language or literature
Psychology	Grade 5-5 in combined science (biology units) or 5 in biology, plus 5 in mathematics and 5 in English language or literature
Religious studies: philosophy and ethics	Grade 6 in religious studies or history and 6 in English language or literature
Sociology	Grade 5 in English language or literature and 5 in a GCSE humanities subject (religious studies, history, geography)
Spanish	Grade 6 in Spanish and 5 in English language or literature



ENTRY REQUIREMENTS FOR LEVEL 3 BTEC/CTEC STUDY

Minimum entry requirements: five Grade 9-4 at GCSE plus subject specific requirements

SUBJECT	SPECIFIC MINIMUM GCSE (or equivalent) REQUIREMENTS
Level 3 BTEC art & design (triple award only)	Grade 5 in art and design or merit in Level 2 BTEC art and design
Level 3 BTEC business (single, double or triple award)	Grade 4 in mathematics and English language or literature or a high merit in Level 2 BTEC business
Level 3 BTEC computing (extended certificate single award)	Grade 5 in mathematics and English language and Grade 5 or above in computer science.
Level 3 BTEC drama- performing arts (single award)	Grade 6 in GCSE drama (if taken) and Grade 5 in GCSE English language or literature (applicants who have not taken GCSE drama will need to pass an audition with the subject leader)
Level 3 BTEC sport (double award)	Grade 4 in mathematics and English language or literature, 5-5 in GCSE combined science and 4 in either physical education or biology
Level 3 BTEC science (double award)	Grade 4-4 in GCSE combined science or 4 in biology, chemistry and physics; and Grade 4 in mathematics and English language or literature, if oversubscribed preference will be given to students with Grade 5-5+ in combined science or 5+ in separate sciences

ENTRY REQUIREMENTS FOR LEVEL 2 BTEC STUDY

SUBJECT	SPECIFIC MINIMUM GCSE (or equivalent) REQUIREMENTS
Level 2 BTEC art & design	Grade 9-3 in five GCSE subjects including English language or literature, mathematics and art or design technology
Level 2 BTEC business administration	Grade 9-3 in five GCSE subjects including English language or literature and mathematics

Art: Fine art A Level

Specific entry requirements:

Grade 5 in GCSE fine art or merit in Level 2 BTEC art and design

What will I be doing?

You will create a lot of practical pieces, including drawing, painting, printmaking, graphic design and sculpture in a variety of media. In practical work, specific skills are taught in all the disciplines in order to encourage confidence and creativity with a broad range of materials and processes. You will also be studying aspects of nineteenth and twentieth century art, craft and design. This will involve a number of visits to art galleries, museums and studios of practising artists.

How will success help me to continue with my education or secure a good career?

An A Level in art will qualify you to follow a range of higher education courses. Our art and design students often progress to degree courses in art and design, specialising in one or more of the following areas: fine art, fashion, graphic design, interior design, textiles. Fine art is a requirement for those wishing to study architecture.

How is the course assessed?

A Level is assessed in two parts: personal study and externally set assignment. The personal study assessment is completed over the duration of the course. The externally set assignment is assessed in practical examination.

Examination board: Edexcel



Art: Graphic communications A Level

Specific entry requirements:

Grade 5 in any GCSE art and design subject or merit in Level 2 BTEC art and design

What will I be doing?

You will do a lot of practical work where you will learn skills in illustration, computer graphics, digital imaging and multimedia. Projects are based around the design and production of advertising and publicity material, including packaging and advertising for publications and TV. You will visit professional studios and collections and work with professional practitioners in this field.

How will success help me to continue with my education or secure a good career?

An A Level in graphic communication will qualify you to follow a range of higher education courses involving graphic communication, graphic design and games design.

How is the course assessed?

This course is assessed in two parts: personal study and externally set assignment. The personal study assessment is completed over the duration of the course. The externally set assignment is assessed in practical examination.

Examination board: Edexcel



IN AN INSTANT HE VAPORIZED, AS IF HIS PURPOSE FULFILLED AND WITHOUT TIME FOR REPLY THE MAN BEGAN UP A HILL TOWARDS THE PAYPHONE AT THE TOP HE CLIMBED, RESTED AND CLIMBED, IN HIS MIND CHARTING "I CAN", THIS TIME NOT DISTURBED BY AN AMALGAMATION OF MAN HE REACHED THE HANDSET AND DISRUPTED ITS VIBRATING CHROME SHEEN, PUT IT TO HIS EAR ONLY TO HEAR "YOU'VE CALLED THE VOICE OF REASON... AND GOT THE ANSWERING MACHINE"

Art: Photography A Level

Specific entry requirements:

Grade 5 in any GCSE art and design subject or merit in Level 2 BTEC art and design

What will I be doing?

Photography is both a practical and a theoretical subject. You will be studying photography as a means of personal enquiry and expression. You will learn techniques of 35mm and digital photography. These will include taking photographs, processing film and developing prints in black and white. You will also learn how to use computers to edit and manipulate photographs. The subject matter for the course includes landscape and portrait photography and how environmental and social issues affect images.

An important component of the course is digital imaging, both still and video. You will be working with state of the art equipment in this area to produce colour photography and multimedia projects.

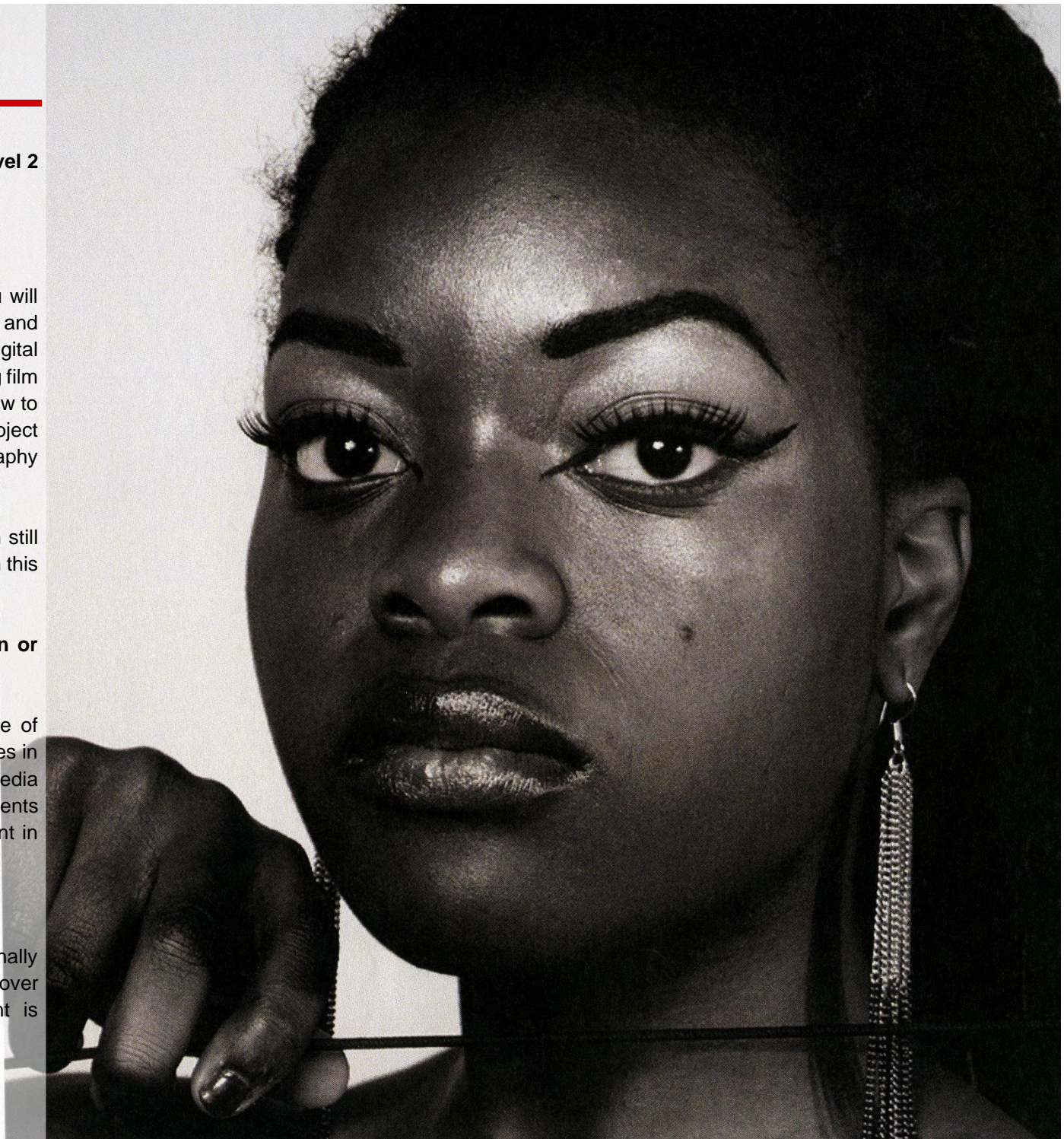
How will success help me to continue with my education or secure a good career?

An A Level in photography will enable you to follow a range of courses at university. Students often progress to degree courses in photography or many related specialist fields including: media studies; fashion; graphic design and interior design. Some students choose to apply for other degree courses or enter employment in photography-related work.

How is the course assessed?

This course is assessed in two parts: personal study and externally set assignment. The personal study assessment is completed over the duration of the course. The externally set assignment is assessed in practical examination.

Examination board: Edexcel



Art: Product design A Level

Specific entry requirements:

Grade 5 in any GCSE art and design subject or merit in Level 2 BTEC art and design

What will I be doing?

Product design is both a practical and a theoretical subject. It seeks to develop your knowledge, understanding, skills and application for designing products. Product design encompasses a wide range of design disciplines but is firmly rooted in the skills required to design and make high quality products. You will be given the opportunity to develop your creative, technical and practical skills through a series of product investigation, design and manufacturing activities. You will also develop your knowledge and understanding of materials and processes used in design and technology. The modern designer must have a good working knowledge of the use of ICT and systems and control technology in the design and manufacture of products. You will become aware of the important contributions of designers from the past which may provide inspiration for future design.

How will success help me to continue with my education or secure a good career?

This course aims to develop your creativity, capability and entrepreneurial skills; to apply knowledge and understanding to a range of technological activities and to develop your critical thinking and collaborative skills. Product design combines well with mathematics and physics where further study in engineering is the aim. Other subjects that complement product design are art, English, business studies and ICT.

Product design students often go on to take degree courses in the following areas: 3D product design; industrial design; architecture; model making; systems design; graphical design; packaging design; exhibition/display design; engineering (mechanical, structural and electronic); furniture design and manufacture; cabinet making; interior design and antique restoration.

How is the course assessed?

This course is assessed by internally assessed design and make projects and an externally set examination.

Examination board: AQA



Art: Textiles A Level

Specific entry requirements:

Grade 5 in any GCSE art and design subject or merit in Level 2 BTEC art and design

What will I be doing?

In A Level textiles you will create many practical pieces where you will learn skills in fabric printing and weaving and garment construction. Projects are based on the design of fabrics and products for the fashion and textile industry. You will visit professional fashion and textiles collections and work with professional practitioners in this field.

How will success help me to continue with my education or secure a good career?

An A Level in textiles will qualify you to follow a range of higher education courses. Our art and design students often progress to degree courses in art & design, specialising in one or more of the following areas: fine art; fashion; graphic design; interior design or textiles. You can also use what you have learnt in art and design to help you in other degree courses. Both courses might lead you to consider employment in design studios, exhibitions, the printing trade or any career which requires your creative skills and talents.

How is the course assessed?

This course is assessed by an externally set assignment with a timed practical examination judged by an external moderator. The examination is effectively the completion of the final practical project, without help.

Examination board: Edexcel



Biology A Level

Specific entry requirements:

High Grade 6-6 in GCSE combined science or high Grade 6 in GCSE biology, plus Grade 6 in GCSE mathematics and Grade 5 in GCSE English language or literature

What will I be doing?

A Level biology covers a broad range of topics chosen to allow progression to a wider range of biological courses at higher education: biochemistry and molecular biology; animal and plant physiology; genetics or microbiology. The specification combines more traditional elements, such as the kidney, with more modern biological ideas such as epigenetics. Students also develop their practical skills through the core practical component of the course.

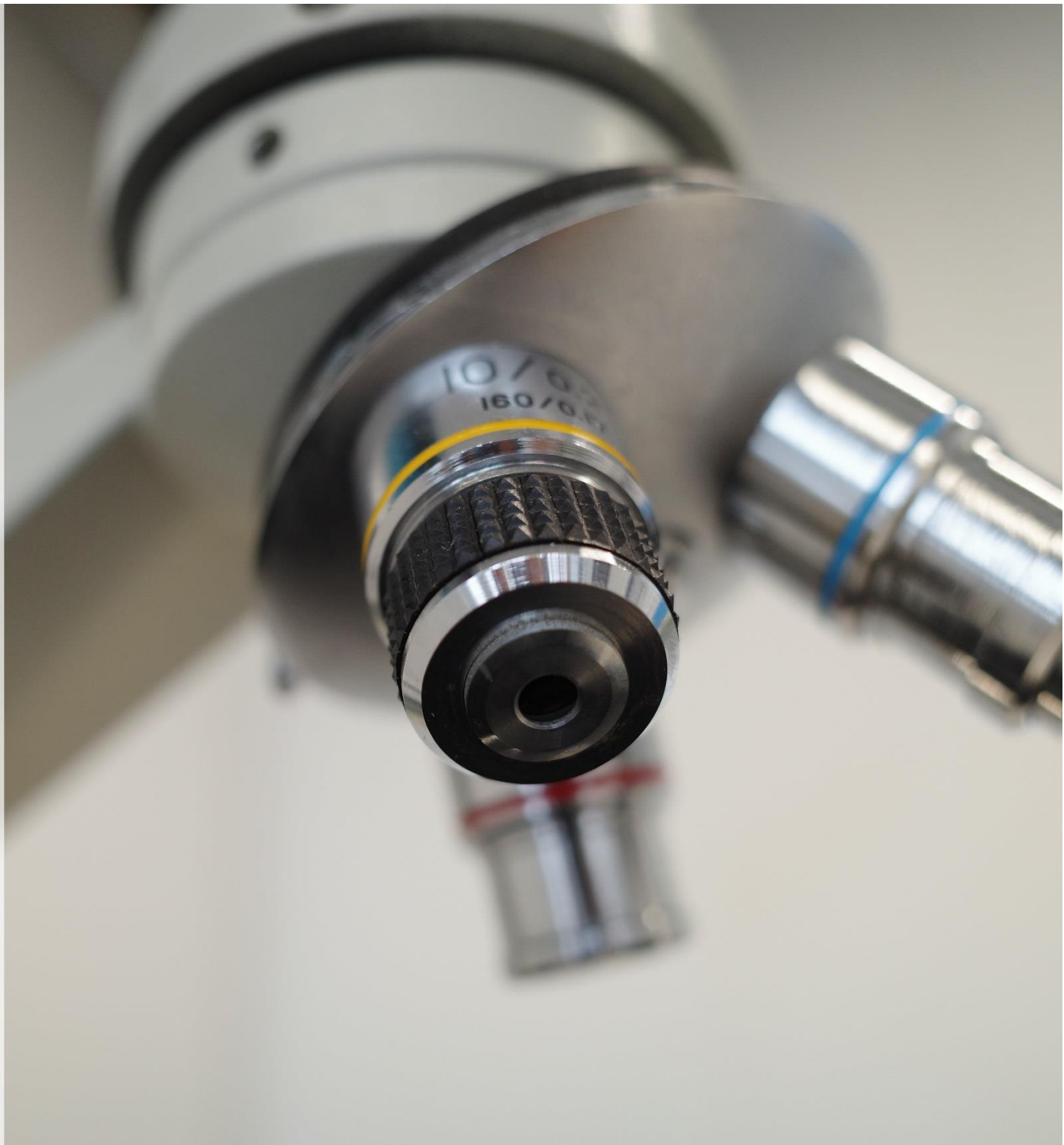
How will success help me to continue with my education or secure a good career?

An A Level in biology will enable you to follow a range of courses at university, such as biological sciences, biochemistry, ecology, pharmacy and medicine.

How is the course assessed?

The course is assessed by three written examinations at the end of Year 13. There are also compulsory core practicals which students must pass in order to qualify to sit their written examinations. Please note that this course includes a compulsory field trip, during the second year, which students are expected to fund.

Examination board: Edexcel Biology B



Chemistry A Level

Specific entry requirements:

High Grade 6-6 in GCSE combined science or high Grade 6 in GCSE chemistry, plus Grade 6 in GCSE mathematics and Grade 5 in GCSE English language or literature

What will I be doing?

The first year of the course covers the three main strands of chemistry: inorganic, organic and physical, with a focus on practical work which teaches the use of chemicals and their related hazards. Topics covered include atomic structure and the periodic table, bonding and structure, the fundamentals of organic chemistry, energetic and chemical kinetics and the part they all play in industrial chemistry.

The second year of the course covers the three main strands of chemistry: inorganic, organic and physical, with a focus on practical work which teaches the use of chemicals and their related hazards. Topics covered include atomic structure and the periodic table, bonding and structure, organic chemistry, transition metal chemistry, energetics, chemical kinetics and equilibria.

How will success help me to continue with my education or secure a good career?

An A Level in chemistry will enable you to follow a range of courses at university, such as pure chemistry, biochemistry, biomedical sciences and pharmacy. Students wishing to study medicine must pass chemistry A Level, usually with a Grade A.

How is the course assessed?

The course is assessed by three written examinations at the end of Year 13. There are also compulsory core practicals which students must pass in order to qualify to sit their written examinations.

Examination board: Edexcel



Computer science A level

Specific entry requirements:

Grade 6 in GCSE computing, plus Grade 6 in mathematics and Grade 5 in English language or literature

What will I be doing?

You will develop the ability to think systematically, logically and creatively. This will greatly enhance your analytical skills to develop solutions to real life problems and give you the opportunity to analyse key features and trends in the development of technology and computer science.

The purpose of this course is to develop your programming skills and theoretical knowledge of computer science. You will be required to use the knowledge and skills gained throughout the course to solve or investigate a practical real-life problem.

How will success help me to continue with my education or secure a good career?

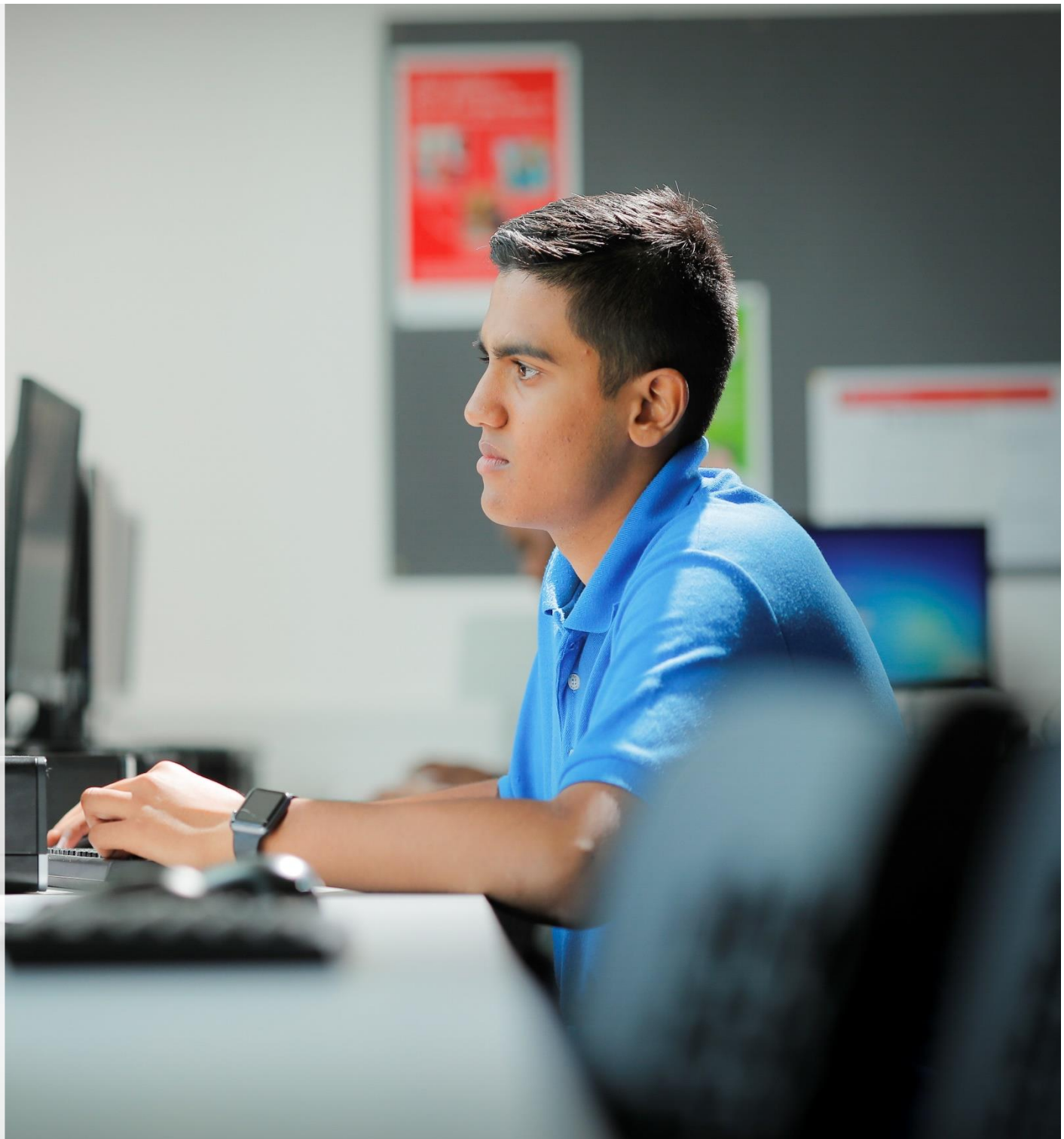
This course enables students to develop computational thinking/problem solving skills, which are essential for workplace or further studies beyond the scope of computer science.

An A Level in computer science will equip you with key skills to access a wide range of courses at university or apprenticeship programmes or work opportunities. Students get a good foundation to progress to degree courses in computing, software engineering, information technology, media and the internet, business, consulting and management.

How is the course assessed?

The course is assessed by two written examinations and one piece of coursework.

Examination board: AQA



Economics A Level

Specific entry requirements:

Grade 6 in GCSE mathematics and Grade 5 in GCSE English language or literature

What will I be doing?

This course is designed to allow you to develop an understanding of economics by examining current economic issues, problems and institutions that effect everyday life. Your work will focus on developing your knowledge and skills to explain and evaluate the important factors involved within an economy. You will be learning about the working of individual product markets, the reasons why markets fail, the theory of market structure and the working of national economies. There is a focus on decision making and how government can improve the outcomes in individual markets and for the whole economy.

How will success help me to continue with my education or secure a good career?

An A Level in economics will enable you to follow a range of degree courses at university. Students enrol onto a number of economics related courses, such as marketing, finance, economics, European business and public relations. If you have studied economics, employers appreciate that you understand the environment in which a business is run. The skills and knowledge you will acquire on the course are well regarded by future employers.

How is the course assessed?

This course is assessed by three written examinations at the end of Year 13.

Examination board: OCR

Consumer and producer surplus

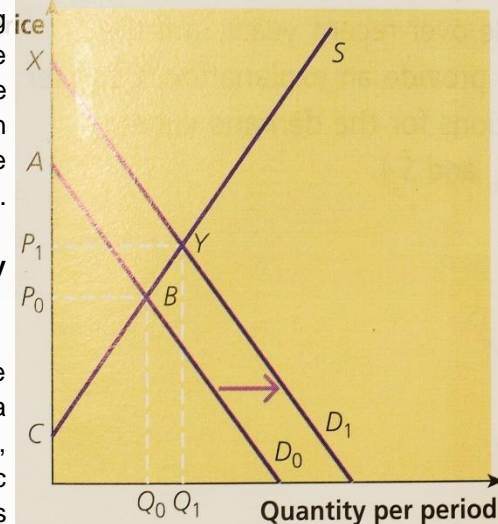


Figure 5.9 Consumer and producer surplus with an increase in demand

includes a shift in the demand curve. Remember that perfect, so watch the news for examples of events that are likely to affect a market, and draw demand and supply curves to analyse what is expected to happen next.

As explained in Chapter 4, the notions of producer and consumer surplus are important when we come to think about the total welfare that economic agents receive from their economic activities.

A change in the conditions of demand or supply will affect the size of consumer and producer surplus. Figure 5.9 illustrates the effect of an increase in demand: in other words, if consumers are now willing to buy more of a good at any given price. In Figure 5.9, the initial demand is given by D_0 and the supply curve is S . The initial equilibrium price is P_0 and the quantity traded is Q_0 . In this situation, consumer surplus is the area ABP_0 and producer surplus is P_0BC . If demand shifts to D_1 , equilibrium price increases to P_1 and the quantity increases to Q_1 . Consumer surplus is now XYP_1 and producer surplus is P_1YC . In other words, both consumers and producers receive a higher surplus, which makes sense because consumers now value the good more highly.

Notice that a change in the price of a good or service can affect the balance between consumer and producer surplus. This in turn could be seen as a change in the distribution of surplus between consumers and producers, as well as a change in the overall level of welfare in society.

English literature A level

Specific entry requirements:

Grade 6 in GCSE English Language and Grade 6 in GCSE English Literature

What will I be doing?

English literature offers you the challenge of reading and studying a wide range of literature written at various periods of time and in different styles. These will include: novels, short stories, plays and poems. As well as studying specific texts for the examination, you will gain knowledge about the social, historical and cultural contexts of certain writers and their works.

You will learn how to analyse texts and to write about them critically. You will develop your own responses to literature and combine this with knowledge of how literature 'works', how writers achieve effects in their writing, and how effectively they 'shape' their works or create characters and settings.

How will success help me to continue with my education or secure a good career?

It is necessary to have English literature A Level for entry to an English literature (single or joint honours) degree course. Employers recognise that you have advanced and sophisticated language skills, including the ability to analyse texts and to express yourself clearly. It is an excellent subject for those intending to follow careers in law, social sciences, business or management, journalism, media or teaching.

How is the course assessed?

This course is assessed by three written examinations as well as one piece of internally assessed coursework.

Examination board: Edexcel



French A Level

Specific entry requirements:

Grade 6 in GCSE French and Grade 5 in GCSE English language or literature

What will I be doing?

The aim of the course is for you to be able to communicate fluently in French. All of your lessons will be conducted in the target language and through the topics studied you will develop a high level of competency in speaking, listening, reading and writing. You will study the language through a variety of stimuli, using authentic materials, such as newspapers, magazines, radio, television programmes and the internet. You will learn how to speak colloquially, organise discussions and present arguments and information. In addition, you will be able to write accurately in the target language. Grammar will be studied through a systematic programme relevant to the topic studied and the skills required. A foreign language is essential to giving you a well-rounded knowledge of the world we live in and a competitive edge when applying for jobs and universities. It is also a good complement to other A Level subjects, such as English and mathematics.

How will success help me to continue with my education or secure a good career?

Success at A Level in a modern foreign language shows employers and college admissions tutors that not only are you immensely intelligent, but also you have acquired first class study skills. Even if you do not study the language as your main degree course, you can often follow a subsidiary course at university. Your ability to communicate in that language will be highly valued by employers. The ability to speak, write well in and understand a foreign language is often the deciding factor when employers are choosing potential employees from a pool of suitable candidates.

How is the course assessed?

This course is assessed by three examinations at the end of Year 13 including a speaking examination. Students will have to complete an independent research project in preparation for the speaking examination, read a novel and watch a film in the target language.

Examination board: AQA



Geography A Level

Specific entry requirements:

Grade 5 in geography and 5 in English language or literature and Grade 5-5 in GCSE combined science or Grade 5 in GCSE physics

What will I be doing?

This course will give you an extensive knowledge and understanding of the two main themes of the subject: human geography and physical geography. Human geography deals with how people and the environment interact. Physical geography is all about scientific aspects of the world's changing environment, as well as giving you a better understanding of how mankind and the earth impact on each other. You will also study places of geographical interest.

Year 1:	Year 2:
Tectonic Processes and Hazards	The Water Cycle and Water Insecurity
Coastal Landscapes and Change	The Carbon Cycle and Energy Security
Globalisation	Superpowers
Regenerating Places	Global Development

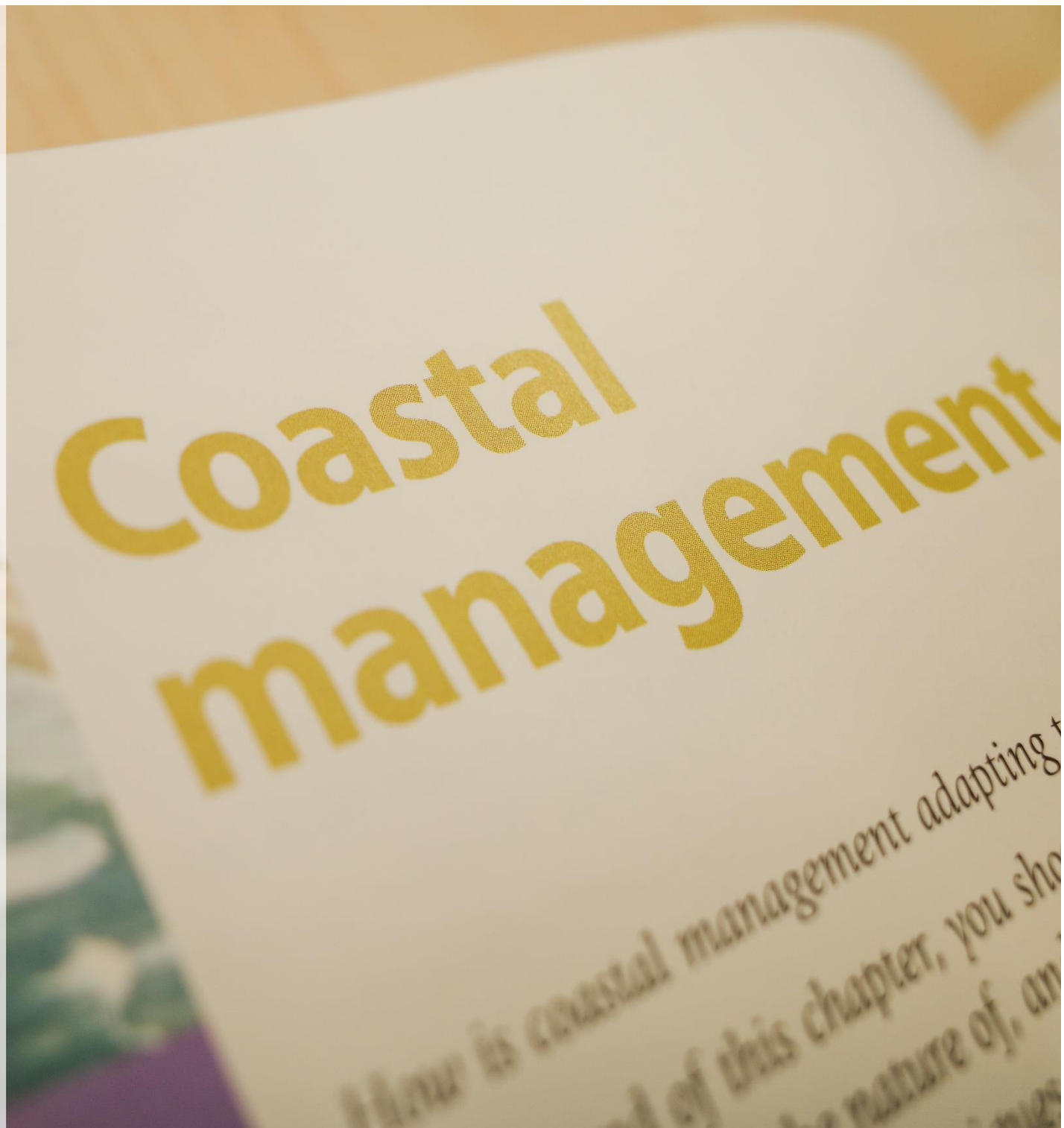
How will success help me to continue with my education or secure a good career?

Geography is a very well regarded A Level and will enable you to follow a range of courses at university. Geography has links with both the sciences and the arts and is a good preparation for jobs which involve planning and decision-making in the business and industrial world as well as for jobs which require an understanding of current affairs.

How is the course assessed?

The course is assessed by three written examinations: physical geography; human geography and a synoptic paper.

Examination board: Edexcel



History A Level

Specific entry requirements:

Grade 5 in GCSE history and Grade 5 in GCSE English language or literature

What will I be doing?

In the first year, you will study two units. The first is The Making of a Superpower USA: Part One from Civil War to World War, 1865-1920. This will look at how the USA developed politically, socially, economically and ideologically. The other is The Making of Modern Britain: Part One Building a New Britain, 1951-1979, an in depth study which focuses on key ideas, events and developments in Britain at this time.

In the second year, you will build on your previous work. You continue with The Making of a Superpower USA: Part Two Crisis and the Rise to World Power, 1920-1975 and also The Making of Modern Britain: Part Two Modern Britain, 1979-2007. Students also undertake the historical investigation; The Tudor Century 1485-1603.

How will success help me to continue with my education or secure a good career?

An A Level in history will enable you to follow a range of courses at university. History is recognised by universities and employers as a subject requiring discipline and hard work. The course develops advanced skills in information acquisition and selection, forming sound judgements and formulating a plan of action. Many teachers, lawyers, civil servants, managers and people in positions of leadership have studied history at advanced level.

How is the course assessed?

Students are assessed by two written examinations and one piece of coursework.

Examination Board: AQA



Mathematics A Level

Specific entry requirements:

High Grade 6 in mathematics

What will I be doing?

There are two components of mathematics A Level: pure mathematics; and applied mathematics.

In pure mathematics you will learn how to construct rigorous mathematical arguments through the appropriate use of precise statements, logical deductions and inferences. You will also build upon your GCSE-level knowledge of algebra, geometry and number to apply these skills to more complex problems across a number of contexts.

In applied mathematics (which covers statistics and mechanics), you will use your pure mathematical knowledge to model and explain physical processes and machines around us, ranging from ball games and roller-coasters to the entire solar system.

How will success help me to continue with my education or secure a good career?

A successful A Level in mathematics offers many opportunities and is seen as an asset not only by universities, but also by a wide range of employers.

Within education, for progression to many courses at university it is important to have strong mathematics skills. For most science, technology, engineering and mathematics (STEM) degree course A Level mathematics is a requirement.

Beyond education, many employers highly value mathematics qualifications because mathematics students become better at thinking logically and analytically. Through solving problems, you demonstrate your ability to think creatively and strategically. The writing of structured solutions, proof and justification of results help you to formulate reasoned arguments and importantly you will have excellent numeracy skills and the ability to process and interpret data. As a result, careers for men and women with good mathematics skills and qualifications are not only well paid but are also interesting and rewarding. People who have studied mathematics are in the fortunate position of having an excellent choice of career.

How is the course assessed?

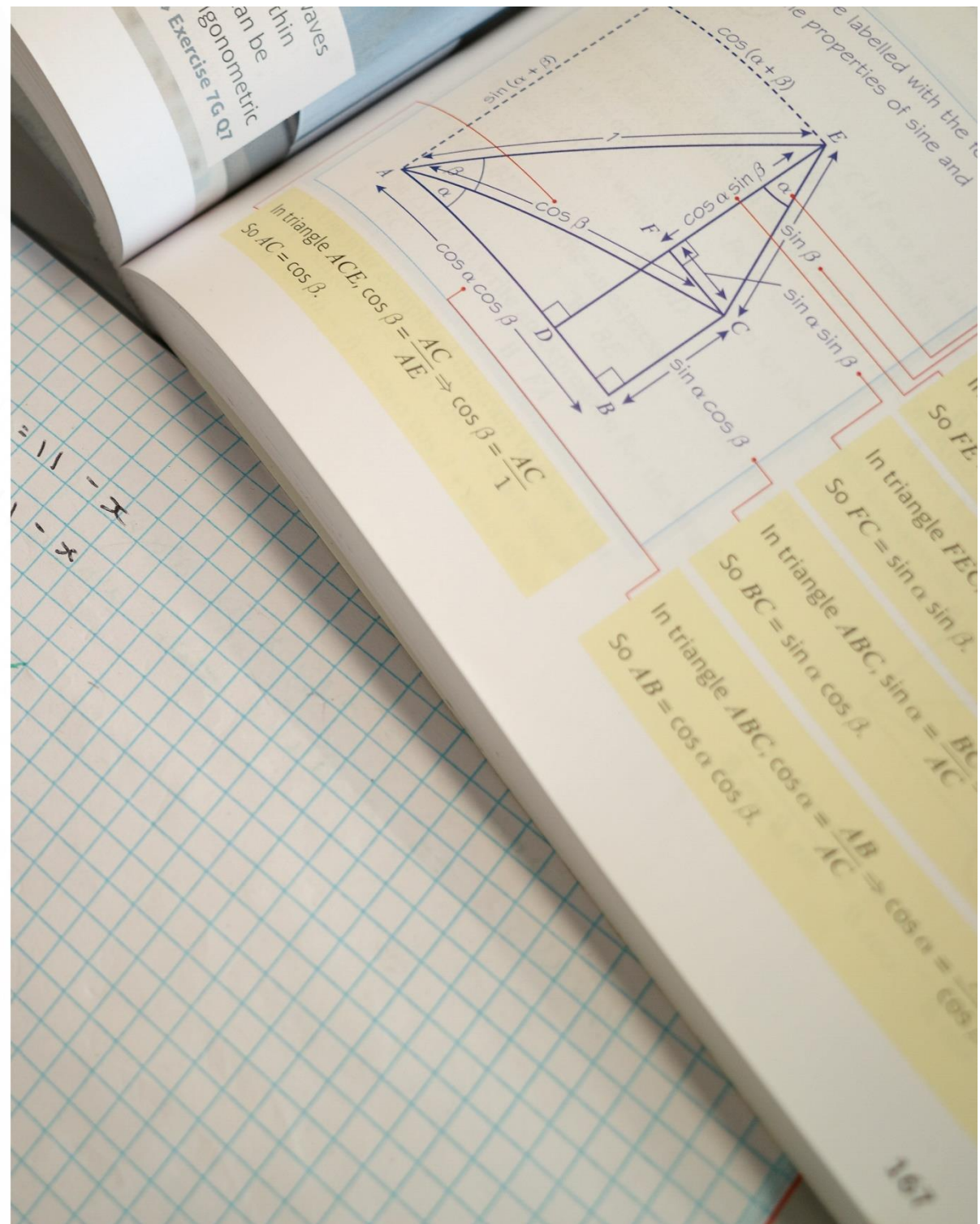
Mathematics A Level is assessed by three equally-weighted written examinations at the end of Year 13. These are as follows:

Pure mathematics 1 (worth 100 marks, 2 hours)

Pure mathematics 2 (worth 100 marks, 2 hours)

Applied Maths (Section A – Statistics (50 marks) and Section B – Mechanics (50 marks), 2 hours)

Examination board: Edexcel



Further mathematics A Level

Specific entry requirements:

Grade 8 or 9 in GCSE Mathematics

What will I be doing?

Further mathematics is made up of four modules at A Level. The first two of these are core modules, which all students study. Both core modules contain exclusively pure mathematics. The third and fourth modules are optional modules, and you are required to select two from a number of possible modules, detailed below.

The two core modules in further mathematics A Level build on A Level mathematics topics, and examples of what you will learn include: how to use matrices to solve simultaneous equations; how to use differential equations to model real-life situations; and how to prove mathematical statements using induction. In addition to this, you will also learn about some entirely new topics, such as complex numbers and hyperbolic functions. Optional modules in A Level further mathematics include Further Pure 1 & 2, Further Statistics 1 & 2 and Further Mechanics 1 & 2. You will choose which two of these six modules you would like to pursue at the end of Year 12. We always encourage students to pick the modules which they enjoy studying most, but some consideration should also be made for which of these modules will be most helpful to your next phase of study. For example, if you plan to study engineering at university, it may be sensible to choose the Further Mechanics optional modules.

How will success help me to continue with my education or secure a good career?

Within education, studying A Level further mathematics is likely to improve your grade in A Level mathematics. The extra time, additional practice, further consolidation and development of techniques contribute to improved results in A Level mathematics. Outside education, having an A Level in further mathematics is a way to make your application stand out from the crowd. Employers particularly value this qualification as it demonstrates a Level of problem-solving which is not found in other subjects. This is shown by the fact that further mathematics is the top-earning A Level subject according to The Times Education Supplement's independent study.

How are the courses assessed?

Further mathematics A Level is assessed by four equally-weighted written examinations at the end of Year 13. These are as follows:

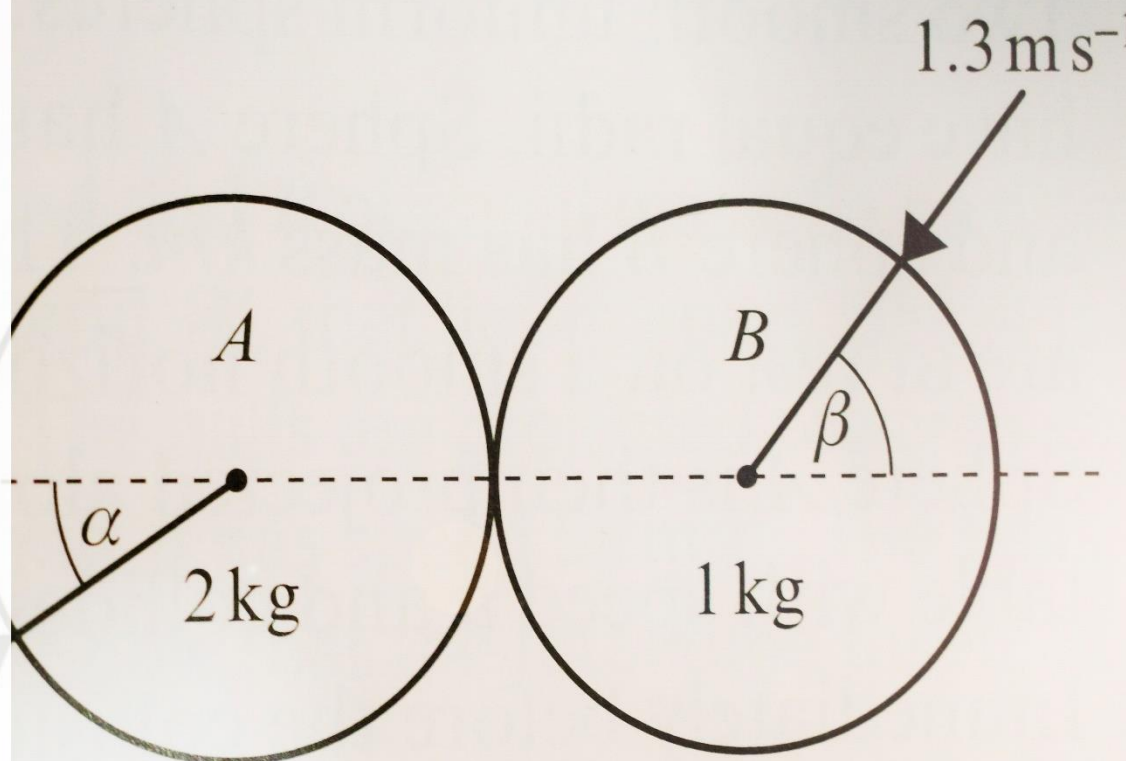
Core Pure mathematics 1 (worth 75 marks, 1.5 hours)

Core Pure mathematics 2 (worth 75 marks, 1.5 hours)

Option 1 (worth 75 marks, 1.5 hours)

Option 2 (worth 75 marks, 1.5 hours)

Examination board: Edexcel



Two smooth uniform spheres A and B of equal radius have masses 2 kg and 1 kg respectively. They are moving on

Media studies A Level

Specific entry requirements:

Grade 5 in GCSE English language or literature

What will I be doing?

AQA's A Level media studies specification is designed to encourage you to:

- enhance your enjoyment and appreciation of the media and its role in daily life
- develop critical understanding of the media through engagement with media products and concepts and through the creative application of practical skills
- explore production processes, technologies and other relevant contexts
- become independent in research skills with opportunities for you to apply your knowledge to your practical work and in developing your own views and interpretations

In Year One, you will investigate the media to understand and evaluate how meanings and responses are created. The contemporary media landscape and its changing contexts are studied in terms of products, platforms and technologies. In Year Two, you are encouraged to demonstrate, develop and formulate your understanding of the media and its influential role in modern society, as well as debate major contemporary media issues.

This course explores key concepts and ideas in the media by looking at 18 set media texts including print advertisements, TV programmes, radio and newspapers. All texts are accompanied by the study and application of high level academic theories.

How will success help me to continue with my education or secure a good job?

A Level media studies will allow you to follow a wide range of courses at university, both theoretical and practical in nature. If you choose to embark on a media career and enter employment in that field, the practical and analytical experience you will have gained and your knowledge and familiarity with real world production strategies will be highly valued by employers.

How is the course assessed?

There are two written examinations at the end of Year 13, each worth 35% of your final grade. You will also produce an advanced production portfolio (NEA) which is worth 30% of your final grade.

Examination board: AQA



Music A Level

Specific entry requirements:

Grade 6 in GCSE music and able to perform to Grade 4 standard. If you have not studied GCSE Music you will need to demonstrate Grade 5 Associated Board of the Royal School of Music theory and practice (or equivalent)

What will I be doing?

If you enjoy listening to music of many styles and traditions, playing a musical instrument as a soloist and in groups and have the desire to create your own original music compositions, then you will find this course both challenging and enjoyable.

Performing – You will be expected to take part in a range of solo and ensemble performances during the two years. There will be the opportunity to develop your performance skills, including sight-reading and improvisation. In the second year of the course, you will present an eight minute recital which will be composed of pieces that are grade 7 or above.

Composing – You will compose two pieces over the two year course, one which is a free composition and one in response to a brief assessing compositional technique. The compositional technique that you will study is Bach Chorale.

Appraising – There are six areas of study, each containing three set works. The areas of study include vocal music, instrumental music, film music, popular music and jazz, fusions and twentieth century music. By developing listening and analysing skills students will be assessed on musical elements, musical contexts and musical language. You will sit a two hour examination which will include multiple-choice, short open question and extended writing essay style questions.

How will success help me to continue with my education or secure a good career?

An A Level in music will enable students to follow a range of music or performing arts courses at university or music college. Music is recognised by universities (including the research-intensive Russell Group universities) and employers as a subject requiring self-discipline, demonstrating skills of analysis, dexterity and commitment. It will be particularly useful if you are considering a career in performing, composing, radio and media work, recording or teaching.

How is the course assessed?

The course is assessed by one solo recital, one composition, one compositional technique paper and one written examination.

Examination board: Edexcel



Music technology A level

Specific entry requirements:

Grade 5 in GCSE music or high Level 2 Pass in NCFE Level 2 Technical Award in Music Technology and Grade 4-4 in GCSE combined science or Grade 4 in GCSE mathematics/physics Good keyboard skills would be advantageous

What will I be doing?

If you enjoy listening to a wide variety of different styles and genres of music and you have the desire to gain a more in depth view of the skills needed for the music technology industry, then you will find this course both challenging and enjoyable.

Component 1: Recording. The examination board will provide a list of artists that you will choose to record a song by. You will be responsible for organising musicians and for carrying out the entire production process from recording to mixing and mastering.

Component 2: Technology-based composition. The examination board will provide three briefs and you will select one of these to create, edit, manipulate and structure sounds to produce a technology-based composition using Logic Pro X.

Component 3: Listening and analysing. This is an examination paper where students are expected to have knowledge and understanding of recording and production techniques in the context of commercial recordings,

Component 4: Producing and analysing. This is an examination paper where students are expected to have knowledge and understanding of editing, mixing and production techniques. This knowledge is then applied to practical tasks using Logic Pro X.

How will success help me to continue with my education or secure a good career?

An A Level in music technology will enable students to follow a range of music technology courses at university. Employers see music-based subjects as a subject requiring self-discipline, demonstrating skills of analysis, dexterity and commitment. It will be particularly useful if you are considering a career in sound engineering, radio and media work, recording or teaching.

How is the course assessed?

The course is assessed by two written examinations and two pieces of coursework.

Examination board: Edexcel



Physical education A level

Specific entry requirements:

Grade 5 in mathematics and English language or literature, 5-5 in GCSE combined science and 5 in either physical education or biology

What will I be doing?

A Level physical education is the study of exercise and sport in terms of human anatomy, health and achievement. It is also about improving the individual's personal skills and performance(s) in a range of sports/exercises, which will then allow them to lead others in developing their personal skills and performance in sports/exercises.

The A Level in physical education is split into three sections:

1. Factors effecting participation in physical activity: This includes anatomy and physiology, skill acquisition and sport and society (2 hour written exam, 35% of final grade)
2. Factors affecting optimal performance in physical activity and sport: This includes exercise physiology and biomechanics, sport psychology and sport and society and technology in sport (2 hour written exam, 35% of final grade)
3. Practical performance in physical activity and sport: this includes students being assessed as a performer or coach in the full sided version of one activity, plus: written/verbal analysis of performance (Internal assessment, external moderation, 30% of final grade)

How will success help me to continue with my education or secure a good career?

The qualification is designed for post-16 students who may want to study a sport related degree course in higher education.

The qualification carries UCAS points and is recognised by higher education providers as meeting admission requirements to many relevant courses including sports science, psychology and physiology.

How is the course assessed?

This course is assessed by two written examinations and a practical assessment.

Examination board: AQA



Physics A Level

Specific entry requirements:

High Grade 6-6 in GCSE combined science or high Grade 6 in GCSE physics and Grade 6 in GCSE mathematics and 5 in English language or literature

What will I be doing?

The first year of the course covers mechanics, electrical circuits, materials and the wave and particle nature of light. Year 1 physics is essentially a practical subject and during the course you will carry out many practical activities.

In the second year, the course covers further mechanics, fields, nuclear and particle physics, thermodynamics and space, nuclear radiation and oscillations. The course continues to develop the practical skills covered in Year 1.

How will success help me to continue with my education or secure a good career?

An A Level in physics will enable you to follow a range of courses at university, including medicine and most engineering courses. It is recognised by universities and employers as a subject requiring discipline and hard work, which develops advanced skills in abstract reasoning, applying knowledge to new situations, solving problems logically and communicating clearly.

How is the course assessed?

The course is assessed by three written examinations at the end of Year 13. There are also compulsory core practicals which students must pass in order to qualify to sit their written examinations.

Examination board: Edexcel



Politics A Level

Specific entry requirements:

Grade 5 in GCSE history or geography and Grade 5 in GCSE English language or literature

What will I be doing?

This course gives you the knowledge to understand how government works, particularly in the UK, but also in other countries. In the first year you will study how people participate in politics, and how the UK government works. In the second year you will specialise in subjects such as the politics of the USA or political ideologies. You will learn about undertaking research, gain a deeper understanding of governments and find out about careers in politics.

How will success help me to continue with my education or secure a good career?

Government and politics A Level will prepare you for a range of courses at university. A degree in politics might lead to you becoming a researcher, joining local or national government, or even becoming a politician. It also supports careers in journalism, education, media and law.

How is the course assessed?

The course is assessed by three written examinations at the end of Year 13.

Examination board: AQA



Psychology A Level

Specific entry requirements:

Grade 5-5 in combined science (biology units) or 5 in biology, plus 5 in mathematics and 5 in English language or literature

What will I be doing?

You will be introduced to six core areas of psychology during Year 1 and then cover these in greater depth in Year 2.

The areas of study are:

Social Psychology: you will research the influence of others on your everyday behaviour. Topics include why you conform to others and those in positions of authority and how your personality influences obedience.

Cognitive Psychology: involves investigating how the human memory works. This includes learning about why we forget and factors that affect the accuracy of eyewitness testimonies.

Developmental Psychology: looks into changes that take place over our lifetime, especially childhood. You will learn about how early attachments impact on your later relationships.

Approaches in Psychology: you will debate whether our behaviour is made up from our social environment or whether it is the result of our biological makeup or cognitive processing.

Psychopathology: this topic identifies the different ways of diagnosing and treating OCD, depression and phobias.

Research Methods: you will review the variety of scientific methods and techniques used in psychological research, such as experimental designs and sampling techniques. You will handle and analyse data.

How will success help me to continue with my education or secure a good career?

This course lays an appropriate foundation for further studies in psychology or related subjects in higher education, such as criminology and consumer psychology (advertising). In addition, psychology is a respected subject and, as it impacts our everyday lives, is unique in its nature.

How is the course assessed?

This course is assessed by three written examinations.

Examination board: AQA



Religious studies:

Philosophy and ethics A level

Specific entry requirements:

Grade 6 in GCSE religious studies or history and Grade 6 in GCSE English language or literature

What will I be doing?

There are three components to the course: philosophy of religion, religion and ethics and development in religious thought.

Philosophy of religion involves studying arguments about whether God exists, analysing the idea of religious experience, questioning why God allows evil to happen, analysing the nature of the soul and exploring the possibility of life after death.

Ethics involves studying the meaning of ethical language, by questioning for example, what it means to call something “good” or “right.” It involves an exploration of different ethical theories and their application. In addition to this, we will explore the concepts of free will and conscience, for example by questioning what makes us decide to act in a particular way. We will also explore ethical issues such as sex and euthanasia.. Developments in religious thought is a chance to learn the history and traditions of one particular religion, we will focus on Christianity. This will involve studying the life and personhood of Jesus and key concepts in Christianity. We will look at religious pluralism and gender in society. We will also explore modern developments and challenges to Christianity, for example secularism and Liberation Theology and Marx.

How will success help me to continue with my education or secure a good career?

Religious Studies is an academic subject which develops skills in critical thinking, debate and analysis. A previous student from Brentside, who went on to study law at Cambridge, commented that A Level religious studies was the most useful preparation for the course. The skills developed in religious studies are transferable and applicable to various university courses and careers.

How is the course assessed?

This course is assessed by three written examinations.

Examination board: OCR



Peter Singer Professor of Bioethics Princeton University.

Students at Brentside had the exciting opportunity of hearing from arguably the world’s most famous living philosopher, Peter Singer. He is currently a professor of Bioethics at Princeton University and laureate professor at the University of Melbourne. Some of his most famous books include “Practical Ethics”, which was published in 1979, and “The Life You Can Save”, which was published in 2009.

Year 12 and Year 13 students learn about Peter Singer as part of their A-level religious studies, and he agreed to speak at the inaugural Ealing Ethics Conference on the condition that we (along with other schools) raised at least £1000 for the Against Malaria Foundation.

Joining him at the conference was Hallvard Lillehammer (Birkbeck College) and Paola Romero (London School of Economics).

Sociology A Level

Specific entry requirements:

Grade 5 in English language or literature and 5 in a GCSE humanities subject (religious studies, history, geography)

What will I be doing?

Sociology is about making sense of the society we live in. It helps us to understand why people behave in the way that they do. It unpicks the thread of our experiences throughout life and shapes our way of thinking. You will form new perspectives of society whilst studying the following topics:

Education: This unit allows you to critically analyse the education system and question a social institution you are actively a member of. Students will investigate the educational differences in achievement of social groups by social class, gender and ethnicity in contemporary society.

Families and households: You will compare the contemporary household to the traditional family and how changing patterns of marriage, cohabitation and gender roles have impacted the various family roles.

Crime and deviance: In this topic, you will cover the social distribution of crime and deviance by ethnicity, gender and social class. Students will also research crime in contemporary society, the media and crime, green crime, human rights and state crimes.

Beliefs in society: Involves researching into religious ideologies and the relationship between science and religion, including both Christian and non-Christian religious traditions. You will learn about the changes in religion and social stability and the emergence of new religious organisations, including cults, sects and denominations.

Theory and methods: You will debate whether the study of sociology is subjective or objective and if it can ever be value free. You will gain a deeper insight into the different sociological perspectives and the relationship between sociology and social policy.

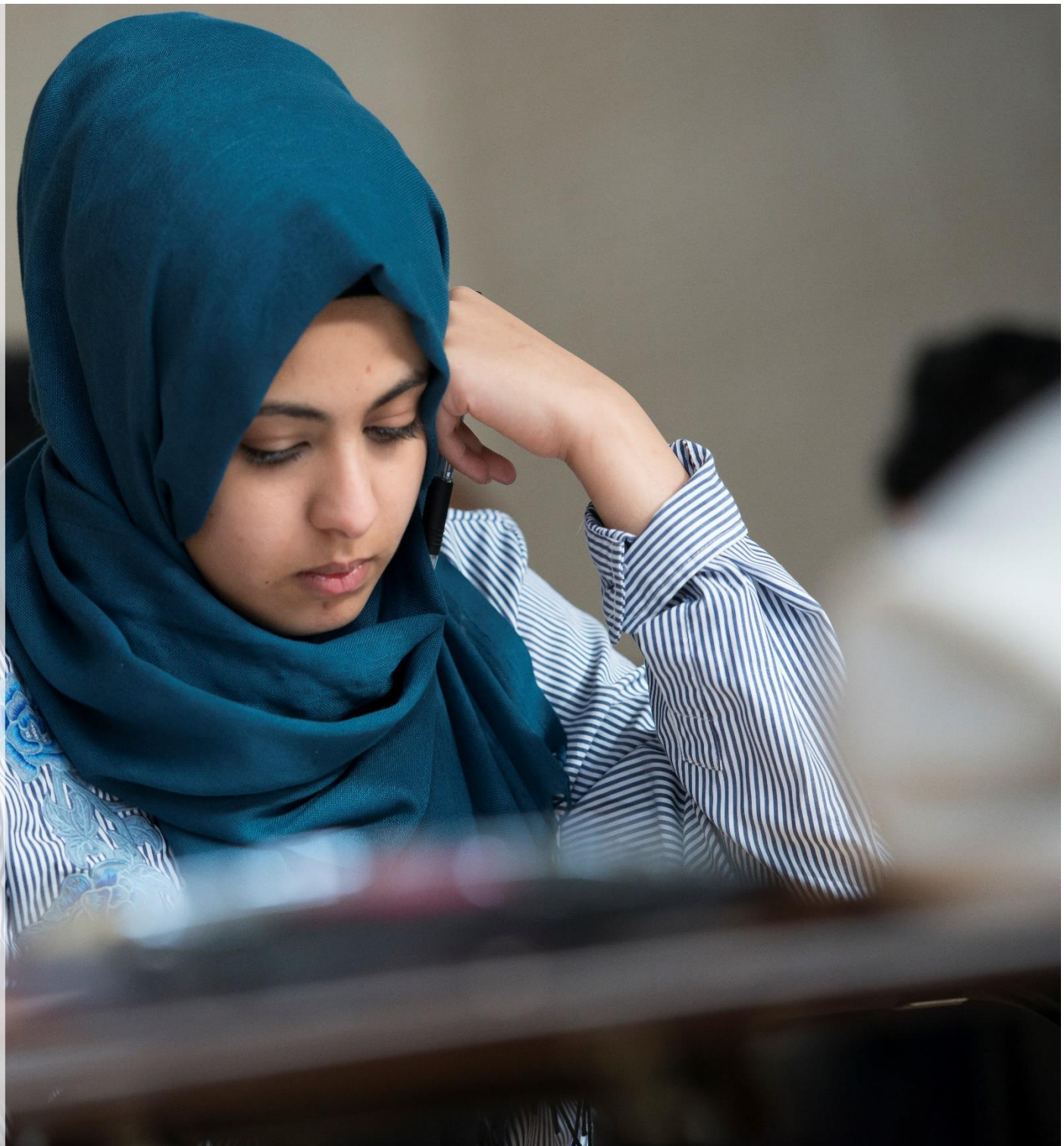
How will success help me to continue with my education or secure a good career?

All of the content that is covered and the skills that are developed help with success in a range of careers such as politics, teaching, journalism, social work, marketing, public relations, counselling and advertising.

How is the course assessed?

This course is assessed by three written examinations.

Examination board: AQA



Spanish A Level

Specific entry requirements:

Grade 6 in GCSE Spanish and Grade 5 in GCSE English language or literature

What will I be doing?

The aim of the course is for you to be able to communicate fluently in Spanish. All of your lessons will be conducted in the target language and through the topics studied you will develop a high Level of competency in speaking, listening, reading and writing. You will study the language through a variety of stimuli, using authentic materials, such as newspapers, magazines, radio, television programmes and the internet. You will learn how to speak colloquially, organise discussions and present arguments and information. In addition, you will be able to write accurately in the target language. Grammar will be studied through a systematic programme relevant to the topic studied and the skills required. A foreign language is essential to giving you a well-rounded knowledge of the world we live in and a competitive edge when applying for jobs and universities. It is also a good complement to other A Level subjects, such as English and mathematics.

How will success help me to continue with my education or secure a good career?

Success at A Level in a modern foreign language shows employers and college admissions tutors that not only are you immensely intelligent, but also you have acquired first class study skills. Even if you do not study the language as your main degree course, you can often follow a subsidiary course at university. Your ability to communicate in that language will be highly valued by employers. The ability to speak, write well in and understand a foreign language is often the deciding factor when employers are choosing potential employees from a pool of suitable candidates.

How is the course assessed?

This course is assessed by three examinations at the end of Year 13 including a speaking examination. Students will have to complete an independent research project in preparation for the speaking examination, read a novel and watch a film in the target language.

Examination board: AQA



Art and design Level 3 BTEC

(triple award)

Specific entry requirements:

Grade 4 in art and design or merit in Level 2 BTEC art and design

What will I be doing?

This qualification is equivalent to three A Levels. The qualification is designed for post-16 students who want to study art and design related degree courses in higher education. You will gain knowledge and understanding of visual communication and the creative process to develop your creative voice. You will develop an understanding of the importance and influence of the work of artists and designers to develop and realise their creative intentions. You will produce a portfolio of art and design work to support progression to higher education. Optional units allow you to gain knowledge in areas such as fashion, textiles, graphics, photography, 3D studies and fine art.

The qualification is intended to be studied over two years as the substantial qualification in your programme of study.

How will success help me to continue with my education or secure a good career?

The qualification has been designed to provide progression onto a wide range of related courses in higher education. Taking this qualification will develop your analytical skills. You will also develop and realise your creative intentions. You will develop a portfolio of art and design projects to support progression to a wide range of related degree courses in art and design. The qualification carries UCAS points and is recognised by higher education providers as meeting admission requirements to many relevant courses, for example a range of degrees including: art and design; interior design; fashion design; textiles; graphic design; photography and fine art.

How is the course assessed?

This course is composed of practical work which is assessed by an external moderator and written work to accompany. There are no written examinations.

Examination board: Edexcel



Computing Level 3 BTEC (Extended certificate single award)

Specific entry requirements:

Grade 5 in mathematics and English language and Grade 5 or above in computer science.

What will I be doing?

This qualification is designed to support learners who are interested in learning about the computing sector alongside other fields of study, with a view to progressing to a wide range of higher education courses, not necessarily in the computing sector. It is designed to be taken as part of a programme of study that includes other appropriate BTEC Nationals or A Levels.

Who is this qualification for? The Pearson BTEC Level 3 National Extended Certificate in Computing is equivalent in size to one A Level. It is aimed at post 16 learners who are interested in an initial introduction to the study of the ICT sector at Level 3 alongside other fields of study, with a view to progressing to a wide range of higher education courses, but not necessarily in computing. It allows learners to gain fundamental knowledge and skills in computing from which they can progress to broader or more specialist study at Level 3. The qualification can be taken in combination with A Levels or other vocational qualifications to meet progression requirements.

How is the course assessed?

4 units of which 3 are mandatory and 2 are external

Mandatory content (83%)

External assessment (58%)



Drama: Performing arts level 3 BTEC

(single)

Specific entry requirements:

Grade 6 in GCSE drama (if taken) and Grade 5 in GCSE English language or literature. Applicants who have not taken GCSE drama will need to pass an audition with the subject leader

How is the course assessed?

Performing Arts BTEC embodies a fundamentally learner-centred approach to the curriculum, with a flexible, unit-based structure and knowledge applied in project-based assessments. Students focus on the holistic development of the practical, interpersonal and thinking skills required to be able to succeed in employment and higher education. You will have to choose and complete a range of units, be organised, take assessments that we will set and mark, and keep a portfolio of your assignments.

How will success help me to continue with my education or secure a good career?

The course supports progression to further education, higher education or employment *(when studied alongside other Level 3 qualifications.)*

How is the course assessed?

Total: 4 Units (3 Mandatory Units, 1 Optional Unit)

Mandatory Units:

- Investigating Practitioners' work
- Developing Skills and Techniques for Live Performance
- Group Performance Workshop

Optional Units:

- Interpreting Classical Text for Performance
- Acting Styles
- Developing the voice for performance
- Improvisation
- Movement in Performance
- Physical Theatre Techniques
- Musical Theatre Techniques
- Variety Performance

Examination board: Edexcel



Science: Applied science Level 3

BTEC (double award)

Specific entry requirements:

Grade 4-4 in GCSE combined science or 4 in biology, chemistry and physics; and Grade 4 in mathematics and English language or literature, if oversubscribed preference will be given to students with Grade 5-5+ in combined science or 5+ in separate sciences

What will I be doing?

You will learn by completing laboratory-based practical assignments, supported self-study assignments, presentations and discussions that are based on real workplace situations, activities and demands. The course covers a wide range of subjects including physiology and industrial applications, as well as using statistical and mathematical tools required for science.

BTECs offer practical experience that is often lacking in more traditional routes such as A Levels. This course allows students to:

- develop their vocational practical skills
- follow scientific procedures in a logical and safe manner
- observe and record data accurately and present information concisely.

How will success help me to continue with my education or secure a good career?

Students who study the course can access a wide range of higher education and work opportunities. The topics studied and methods of study used enable students to organise their own work and make their own decisions which are much sought after skills. Combined with other A Level subjects the course will enable students to gain entry to a range of science and science related subjects such as health, nursing and pharmaceutical sciences. The course is also an excellent entry path into a range of scientifically related work opportunities where further training will be available.

How is the course assessed?

The course consists of three mandatory units plus one optional unit completed over two years. Two of the units are assessed through coursework which is internally assessed and externally moderated. One unit is an external examination. The remaining synoptic unit is a task set and marked externally but completed under supervised conditions.

Examination board: Edexcel



Sport Level 3 BTEC (National Diploma double award)

Specific entry requirements:

Grade 4 in mathematics and English language or Literature, 5-5 in GCSE combined science and 4 in either physical education or biology

What will I be doing?

Equivalent in size to two A Levels. There are 9 units to complete of which 6 are mandatory and 3 are external. Mandatory content (75%). External assessment (45%). This is intended as an Applied General qualification, equivalent in size to two A Levels. It has been designed as part of a two-year programme, normally in conjunction with one or more qualifications at Level 3. This qualification is aimed at learners looking to progress to higher education in this sector.

You will complete 2 externally assessed exams, Unit 1: Anatomy and Physiology, and Unit 2: Fitness Training and Programming for health, sport and well-being, alongside written internally assessed coursework on optional topics.

How will success help me to continue with my education or secure a good career?

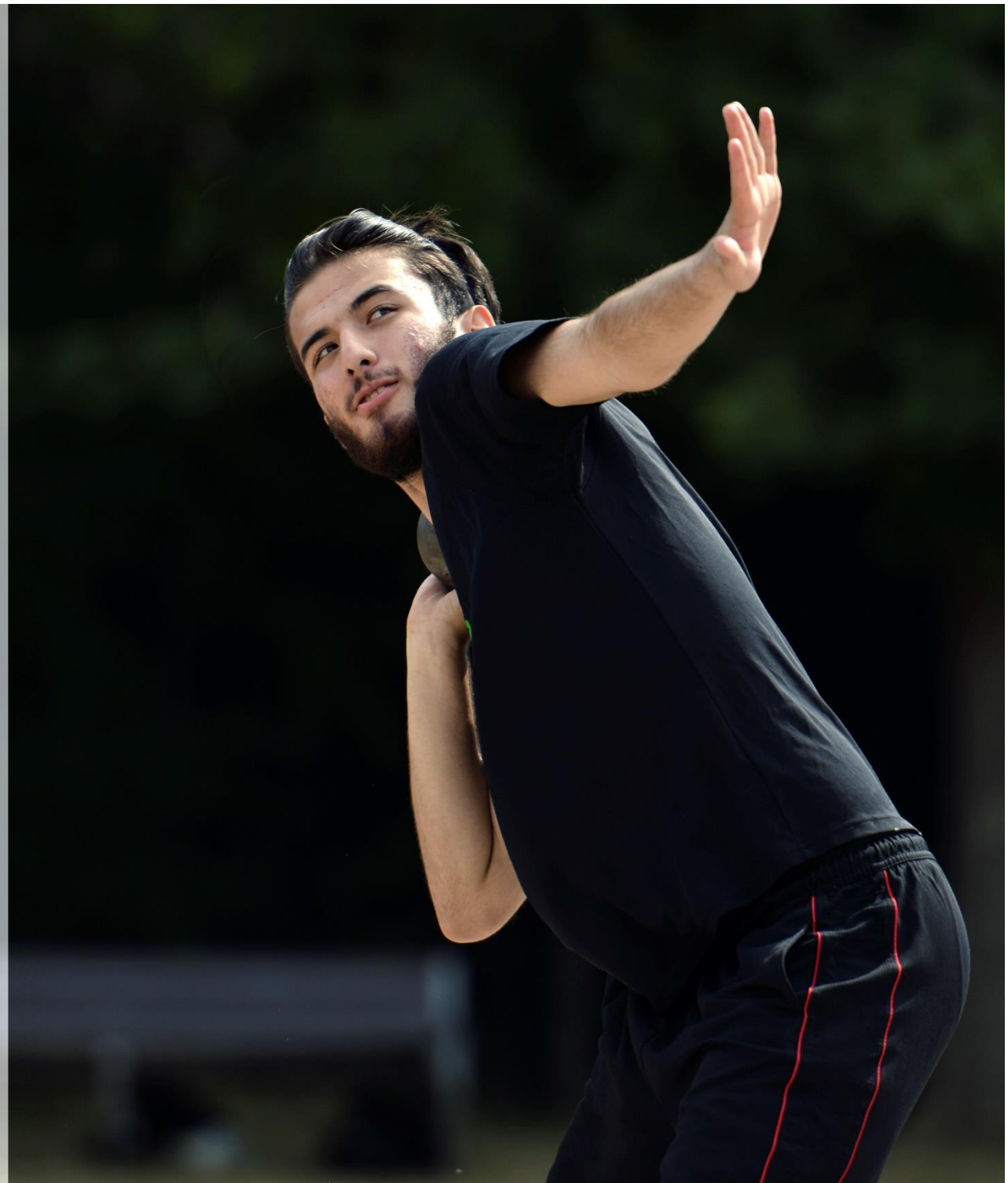
The qualification is designed for post-16 students who may want to study a sport related degree course in higher education. The course focuses on a wide range of aspects of sport including physiology, psychology, sociology, biomechanics and performance analysis.

The qualification carries UCAS points and is recognised by higher education providers as meeting admission requirements to many relevant courses including sports science, psychology and physiology.

How is the course assessed?

This course is assessed by two written examinations and two written assignments.

Examination board: Edexcel



Art and design Level 1 BTEC

(Diploma)

Specific entry requirements:

Grade 9-3 in five GCSE subjects (or equivalent) including English language or literature, mathematics and art or design technology

What will I be doing?

The emphasis throughout this course of study is to give you the technical and creative skills that will prepare you for the world of work, professional practice or entry to higher education. The work involved will be mainly practical and student centered (i.e. related to the goals and ambitions you have). This practical course will teach transferable skills (i.e. those skills that will transfer to any area of employment) such as IT, group work, and communication and presentation skills.

In addition to the core elements of art and design, the units covered will also include: digital manipulation; photography; professional studio practice in traditional media such as drawing, painting, printmaking and sculpture and 3-dimensional imaging.

How will success help me to continue with my education or secure a good career?

If you achieve a merit or distinction, you may decide to study art and design on an advanced vocational course (this could be our Level 3 BTEC art & design course) or A Level courses such as photography, graphic communication, textiles or computer aided design.

How is the course assessed?

This course is composed of practical work assessed by an external moderator and written work to accompany. There are no written examinations.

Examination board: Edexcel



Business administration LEVEL 2

Specific entry requirements:

Grade 9-3 in five GCSE subjects including English language or literature and mathematics

What will I be doing?

Studying business administration will give you an insight into how organisations make important choices. This qualification enables learners to obtain the skills and behaviours needed to start a career in business and professional administration.

The course covers basic business administrative practices and operations such as business activity and understanding the role of administrative services, using technology to complete, process information and planning/organising business events.

Units covered include: understanding administrative services; providing administrative services; using business technology to process and communicate information and planning, organising and supporting business events.

How will success help me to continue with my education or secure a good career?

Successful completion of the BTEC in business administration provides you with a valuable and highly regarded qualification in its own right. The course is designed to be both vocational and academic, so upon completion, you have the opportunity to go into the world of work or continue with your studies. The skills and knowledge you will acquire on the course are well regarded by future employers.

If you achieve a strong merit, you may decide to study the Level 3 BTEC business.

How is the course assessed?

This course is assessed through the completion of four mandatory units; one external examination, two coursework units and one synoptic assessment.

Examination board: Edexcel





BRENTSIDE HIGH SCHOOL

LEARNING AND ACHIEVING TOGETHER

Greenford Avenue, Hanwell, London, W7 1JJ

Telephone: 020 8575 9162

Email: info@brentsidehigh.ealing.sch.uk

www.brentsidehigh.ealing.sch.uk