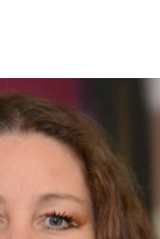


NEWSLETTER



2 September 2024

A MESSAGE FROM THE HEADTEACHER

We hope you have had a restful break over the summer months. As we head towards the start of term, we are very much looking forward to welcoming your children back to school.

This newsletter is a special edition of key information to support all students to ensure they are fully prepared and equipped for a successful start to the new academic year.

Please read this carefully with your child as it contains important information that will help them to succeed.

We look forward to working in partnership with you in the Autumn Term.



Charlotte Hames
Headteacher

Ms Hames

START OF TERM



Tuesday, 3 September Induction Day for Year 7 and 12 only

Year 7: 09:45 arrival for 10 start – 13:30

Year 12: 09:45 – 12:00

Wednesday, 4 September: Induction Day for all students

Year 7: 08:40 – 12:00
(all Year 7s have lunch 11:30 – 12:00)

Year 8: 08:40 – 12:05

Year 9: 08:40 – 12:15

Year 10: 08:40 – 12:05

Year 11: 08:40 – 12:15

Year 12: 09:00 – 12:30

Year 13: 10:30 – 13:00

Lunch is available for all students after their induction for those who wish to take it.

Thursday, 5 September onwards: Timetabled lessons

Year 7: 08:40 – 15:00

Year 8: 08:40 – 15:05

Year 9: 08:40 – 15:05

Year 10: 08:40 – 15:10

Year 11: 08:40 – 15:10

Year 12: 08:40 – 15:10

Year 13: 08:40 – 15:10

KEY DATES 2024

Tuesday, 3 September:	Start of term for Year 7 and 12
Wednesday, 4 September:	Start of term for Years 8, 9, 10, 11 and 13
Tuesday, 10 September:	Year 10 Year Ahead Evening 17:00-18:00
Tuesday, 10 September:	Year 11 Year Ahead Evening 18:15-19:15
Thursday, 12 September:	Year 13 Parents' Information Evening 16:30-18:30
Monday, 16 September:	School photographs Years 7, 10 and 12
Wednesday, 18 September:	Early closure. School closes 13:25 for Open Evening
Thursday, 19 September:	Late start: School starts 09:45
Tuesday, 24 September:	Year 8 Year Ahead Evening 17:00-18:00
Tuesday, 24 September:	Year 9 Year Ahead Evening 18:15-19:15
Tuesday, 1 October:	Year 7 & 12 Settling In Evening 16:30-18:00
Friday, 4 October:	Early closure: School closes 13:25
Friday, 25 October:	INSET day (virtual)

SCHOOL UNIFORM

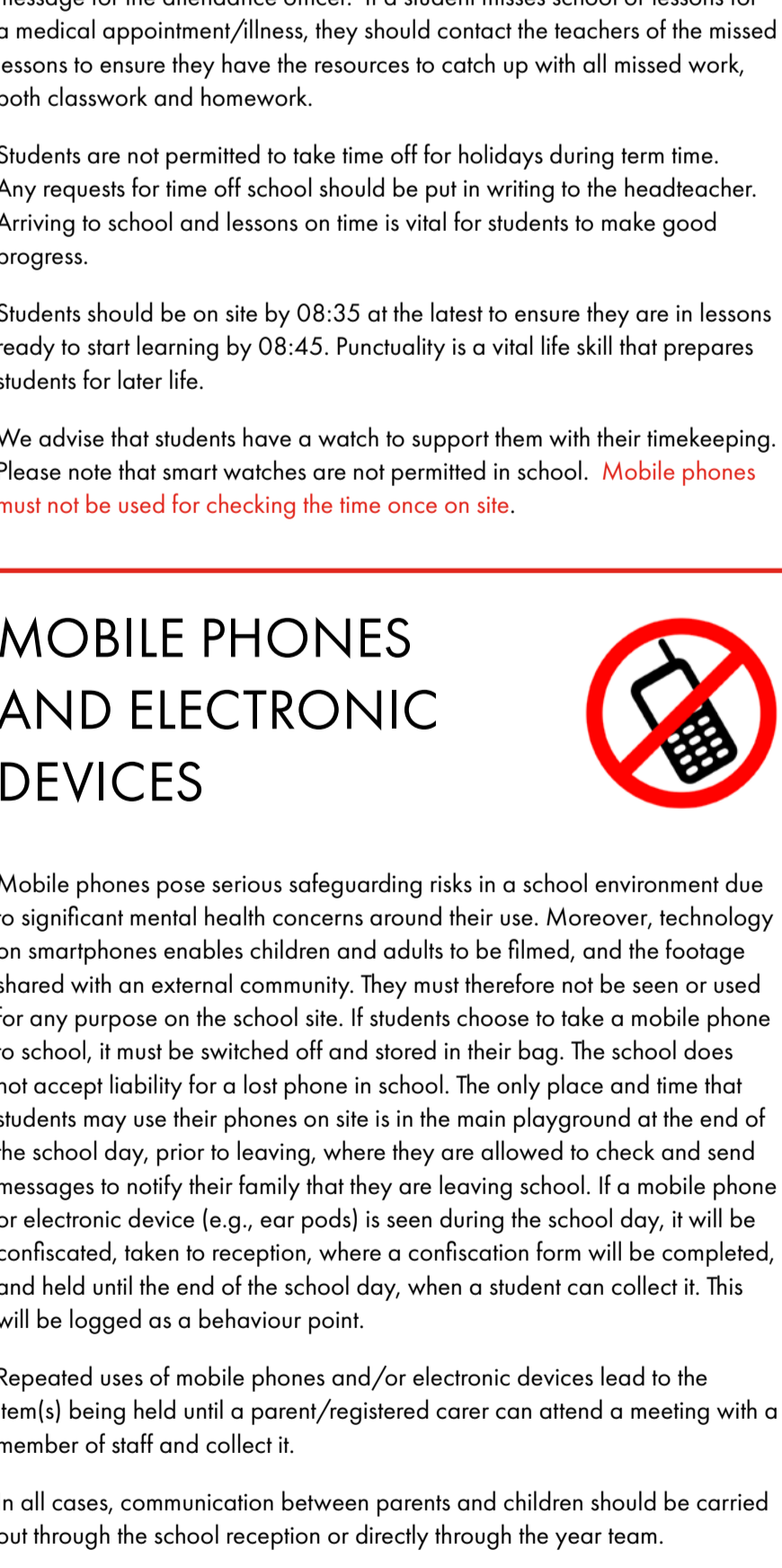
Our uniform identifies students as members of the Brentside High School community and should be worn with pride.

We recognise that over the course of a year, students grow and may require items of uniform to be replaced.

Please check our uniform policy carefully before purchasing any items of uniform to ensure that they are in line with our school dress code.

You can check the details of our uniform policy by visiting our school website: Brentside High School - School Uniform

Hair must be of a natural colour and hair accessories, religious head scarves and hats/the Rastafarian tam should be white or black. No extreme hairstyles such as 'hair tattoos' or very close shaven styles are permitted. Eyebrows should not be shaved or patterned.



The school dress code is designed to be suitable for an educational setting. For this reason the following items are not permitted:
Items not permitted: cardigans or hooded tops, leggings, tracksuit bottoms and tops, plimsoles, pumps, no tight-fitted clothing, jeans or short skirts, open neck/revere collars, baseball caps, make-up of any description including nail varnish. No facial piercing and no visible body adornment.

KEY UNIFORM REMINDERS

- Hair must be of a natural colour and hair accessories, religious head scarves and hats/the Rastafarian tam should be white or black. No extreme hairstyles such as 'hair tattoos' or very close shaven styles are permitted. Eyebrows should not be shaved or patterned.
- Students **must** wear:
 - a plain white school shirt – the **top button must be fastened**, and the shirt tucked in.
 - a plain black blazer with Brentside school badge (sleeves may not be rolled up); optional v-neck jumper (in addition to, not replacing, the blazer)
 - black tailored trousers or black school skirt of **at least knee length**
 - a plain belt, no large buckles. Trousers hems must not be frayed or cut. Trousers should not be worn below the waist
 - plain black, grey or white socks (must be a matching pair) or plain black or tan tights.
 - plain black polishable footwear with no coloured laces or stitching
- Students **may** wear:
 - one pair of plain matching stud earrings worn in the lower ear lobe only. Students will be asked to remove additional piercings.
 - one flat ring, no raised stones
 - a discreet religious symbol may also be worn
- Students **must not** wear:
 - bracelets
 - make-up (including false eye lashes) and nail varnish
 - facial piercings or visible bodily adornment
 - cardigans or hooded tops
 - leggings
 - tracksuit bottoms and tops
 - plimsoles/pumps
 - tight-fitted clothing
 - jeans
 - short skirts
 - open neck/revere collars
 - baseball caps

CHANGES TO THE SCHOOL DAY

ALL YEARS

Wednesday, 18 September: Early closure. School finishes 13:25

Thursday, 19 September: Late start. School starts 09:45

Friday, 4 October: Early closure. School finishes 13:25

Friday, 25 October: INSET day (virtual).



EQUIPMENT FOR LEARNING

ALL YEARS

Developing skills in independent learning leads to success. All students play a vital role in their own achievement, and must take responsibility for their learning. As such, we expect that they come fully equipped to each lesson with their homework complete.

Please ensure your child has the following ready for the start of term:

- A school bag
- A student planner with a timetable glued in (Both will be provided on induction day)
- At least two blue or black pens
- At least two green pens
- At least two pencils
- A ruler
- A glue stick
- A rubber
- A pencil sharpener
- A scientific calculator
- A protractor
- Highlighter pens (at least three different colours)
- A reading book
- A refillable water bottle

RECOMMENDED

- A watch - no smart watches. (Mobile phones must not be used to check the time or timetables)
- Flashcards to support students with revision techniques from Year 7

ATTENDANCE AND PUNCTUALITY

There is a very strong correlation between attendance at school and student achievement. The government expect all students to have a minimum attendance record of 95% to ensure they make good progress.

If your child is absent from school for illness or a medical appointment, please phone school by 08:30 when you will be prompted to leave a message for the attendance officer. If a student misses school or lessons for a medical appointment/illness, they should contact the teachers of the missed lessons to ensure they have the resources to catch up with all missed work, both classwork and homework.

Students are not permitted to take time off for holidays during term time. Any requests for time off school should be put in writing to the headteacher. Arriving to school and lessons on time is vital for students to make good progress.

Students should be on site by 08:35 at the latest to ensure they are in lessons ready to start learning by 08:45. Punctuality is a vital life skill that prepares students for later life.

We advise that students have a watch to support them with their timekeeping. Please note that smart watches are not permitted in school. **Mobile phones must not be used for checking the time once on site.**

MOBILE PHONES AND ELECTRONIC DEVICES

Mobile phones pose serious safeguarding risks in a school environment due to significant mental health concerns around their use. Moreover, technology on smartphones enables children and adults to be filmed, and the footage shared with an external community. They must therefore not be seen or used for any purpose on the school site. If students choose to take a mobile phone to school, it must be switched off and stored in their bag. The school does not accept liability for a lost phone in school. The only place and time that students may use their phones on site is in the main playground at the end of the school day, prior to leaving, where they are allowed to check and send messages to notify their family that they are leaving school. If a mobile phone or electronic device (e.g., ear pods) is seen during the school day, it will be confiscated, taken to reception, where a confiscation form will be completed, and held until the end of the school day, when a student can collect it. This will be logged as a behaviour point.

Repeated uses of mobile phones and/or electronic devices lead to the item(s) being held until a parent/registered carer can attend a meeting with a member of staff and collect it.

In all cases, communication between parents and children should be carried out through the school reception or directly through the year team.

SATCHEL ONE

Satchel One is an important app that the school uses to communicate with students and parents/carers.

Students need to access Satchel One in order to check homework tasks and deadlines and important notices from staff.

Parents/carers can use Satchel One to check their child's homework, attendance, merits, and more.

If you or your child have any difficulty accessing Satchel One, please contact Ms Nagra by emailing s.nagra@brentsidehigh.ealing.sch.uk.

We recommend that ALL parents/carers use the Satchel One app to support their child in making outstanding progress.

NEW APP FOR PARENTS

ALL YEARS

Effective communication is key to a successful home/school partnership.

In addition to Satchel One, we are pleased to have launched Sims App for Parents. We will be sending more information about this app in our next newsletter.

Please watch this very short video to get a flavour of how Sims App for Parents works.

Details of how to download this app have been sent to you via email.

Sims App for parents

